



# HA32 RTJ PRO

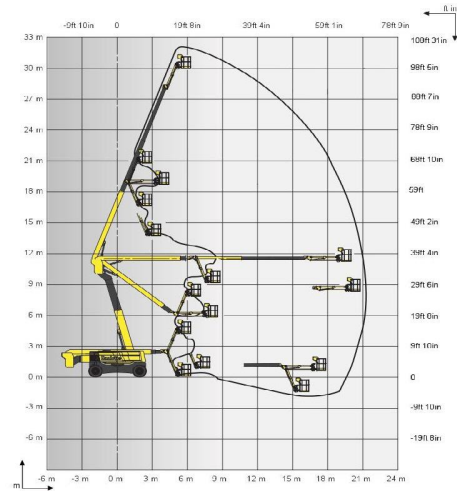
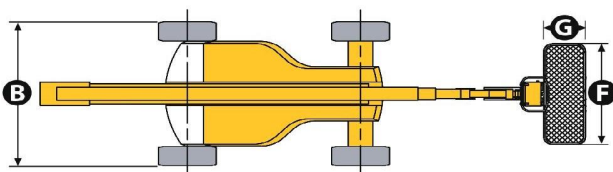
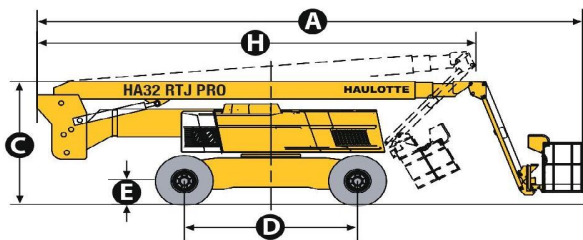
ROUGH TERRAIN ARTICULATING BOOMS



## TECHNICAL DATA

## HA32 RTJ PRO

Working height	31.8 m
Platform height	29.8 m
Horizontal outreach	21.6 m
Up and over clearance	11.35 m
Below ground reach	1.6 m
Lift capacity	250 kg
<b>F x G</b> Platform size	2.44 x 0.91 m
<b>A</b> Length - stowed	11.7 m
<b>H</b> Transport length	8.9 m
<b>B</b> Width	2.53 m
Width - with extended axles	3.3 m
<b>C</b> Height - stowed	2.8 m
Transport height	3.38 m
Vertical jib rotation	140° (+70/-70)
Platform rotation	180° (+90/-90)
Turntable rotation	360 ° continuous
Tailswing	3.3 m
<b>D</b> Wheelbase	3.5 m
<b>E</b> Ground clearance	38 cm
Tilt	5 °
Drive speed	0,5 - 5 km/h
Gradeability	45 %
Turning radius - outside axle extended	5.74 m
Tires - foam-filled	445/65-22.5
Power source	Perkins 55.5 kW - 75.4 hp (Europe) / 62.4 kW - 84.9 hp (outside Europe) TIER III
Weight	20 140 kg



## STANDARD EQUIPMENT

- 4 wheel drive and steer
- Front oscillating axle increasing stability on uneven ground
- 2 extendable axles
- Differential wheel lock increasing rough terrain capacity
- Proportional controls enhancing comfort and safety
- 4 simultaneous movements for highest productivity
- 250kg / 550lbs (2 persons) load capacity unrestricted working envelope
- Modular large platform with drop bar entry gate
- Upper control box protection cover and tool tray in plastic ultra-solid material
- Power to platform 110 V / 220 V (Female plug in the basket)
- Safe to use in winds up to 60km/h - 37mph
- Sound and light alarm for tilt and load
- Electric pump system and emergency descent
- 12 V battery / electrical control system
- Towing hooks
- Hourmeter
- Low fuel level indicator (upper control box)
- Engine pre-heater with light indicator
- Basket compensation +/-10°
- Travel alarm
- Driving beacon
- Enhanced Swing out engine tray for ease of maintenance
- Haulotte Activ'Shield™ Bar (for Europe)