



A TEREX BRAND

# S™ -85 Self-Propelled Telescopic Booms

## Specifications

Models	S-85
Measurements	Metric
Working height maximum*	27.70 m
Platform height maximum	25.90 m
Horizontal reach maximum	23.30 m
Below ground reach	2.89 m
▲ Platform length - 8 ft model	0.91 m
Platform length - 6 ft model	0.76 m
▲ Platform width - 8 ft model	2.44 m
Platform width - 6 ft model	1.83 m
▲ Height - stowed	2.80 m
▲ Length - stowed	12.20 m
Length - transport (jib tucked under)	11.60 m
▲ Width	2.50 m
▲ Wheelbase	2.80 m
▲ Ground clearance - center	0.40 m

## Productivity

Lift capacity	227 kg
Platform rotation	160°
Vertical jib rotation	135°
Turntable rotation	360° continuous
Turntable tailswing	1.42 m
Drive speed - stowed - 2WD/4WD	5.3 km/h
- raised/extended	1.0 km/h
Gradeability - 2WD - stowed**	30%
- 4WD - stowed**	45%
Turning radius: inside	3.70 m
outside	6.60 m
Controls	12V DC proportional
Tires - RT lug	Foam filled 18-625, 16 ply

## Power

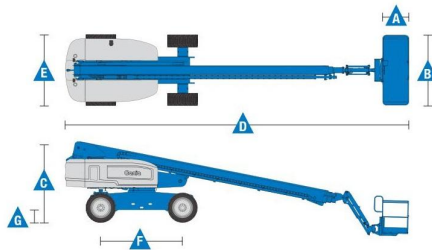
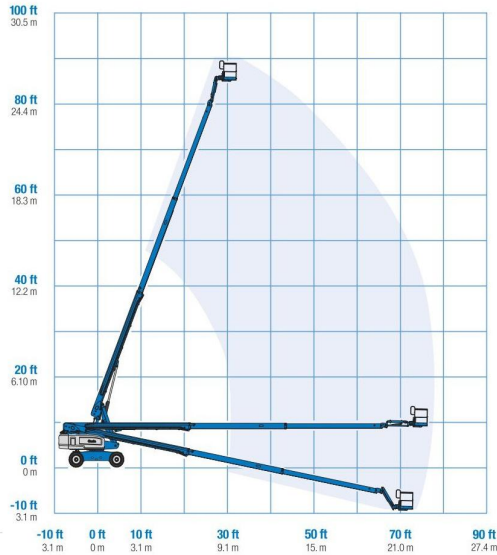
Power source	74 hp (55 kW) Deutz turbo diesel T4i TD2011L04i 63 hp (47 kW) Perkins diesel T4i 804D-33
--------------	---

Auxiliary power unit	12V DC
Hydraulic tank capacity	150 L
Fuel tank capacity - diesel	132 L

## Weight\*\*\*

4WD	17,236 kg
-----	-----------

Range Of Motion S-85 (500 lb capacity)



\* The metric equivalent of working height adds 2 m to platform height.