



A TEREX BRAND

S™-45 Self-Propelled Telescopic Booms

Specifications

| Models | S-45 |
|---------------------------------------|---------|
| Measurements | |
| Working height maximum* | 15.72 m |
| Platform height maximum | 13.72 m |
| Horizontal reach maximum | 11.18 m |
| Below ground reach | 1.5 m |
| A Platform length - 8 ft model | 0.91 m |
| Platform length - 6 ft model | 0.76 m |
| B Platform width - 8 ft model | 2.44 m |
| Platform width - 6 ft model | 1.83 m |
| C Height - stowed | 2.49 m |
| - stowed with Trax option | 2.49 m |
| D Length - stowed | 8.48 m |
| - transport (jib tucked under) | 6.80 m |
| E Width - standard tires | 2.24 m |
| - Trax option | 2.31 m |
| F Wheelbase | 2.20 m |
| G Ground clearance - center | 0.32 m |

Productivity

| | |
|-------------------------------|----------------------|
| Lift capacity | 227 kg |
| Platform rotation | 160° |
| Vertical jib rotation | 135° |
| Turntable rotation | 360° continuous |
| Turntable tailswing | 0.86 m |
| Drive speed - stowed | 7.7 km/h |
| - raised or extended | 1.1 km/h |
| - Trax option stowed | 4.02 km/h |
| - Trax option raised | 1.1 km/h |
| Gradeability - 2WD - stowed** | 30% |
| - 4WD - stowed** | 40% |
| Turning radius - inside | 2.0 m |
| - outside | 4.78 m |
| - Trax option inside | 2.24 m |
| - Trax option outside | 5.18 m |
| Controls | 12 V DC proportional |
| Tires - RT lug | 12-16.5 NHS Trax |

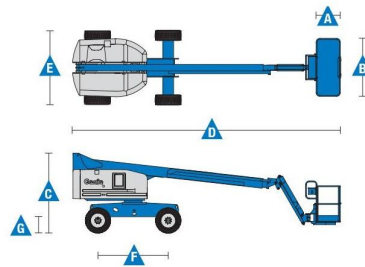
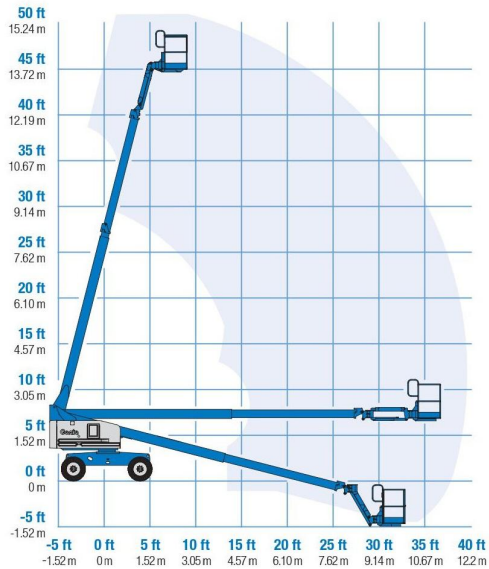
Power

| | |
|-------------------------|--|
| Power source | 48 hp (35.79 kW) Deutz diesel T4f D2.9L4 48 hp (35.79 kW) Perkins diesel T4f 404F-22 75 hp (56 kW) Ford gas/LPG MSG425 |
| Auxiliary power unit | 12 V DC |
| Hydraulic tank capacity | 170 L |
| Fuel tank capacity | 76 L |

Weight***

| | |
|----------|----------|
| Standard | 6,981 kg |
| Trax | 7,085 kg |

Range Of Motion S-45



* The metric equivalent of working height adds 2 m to platform height.