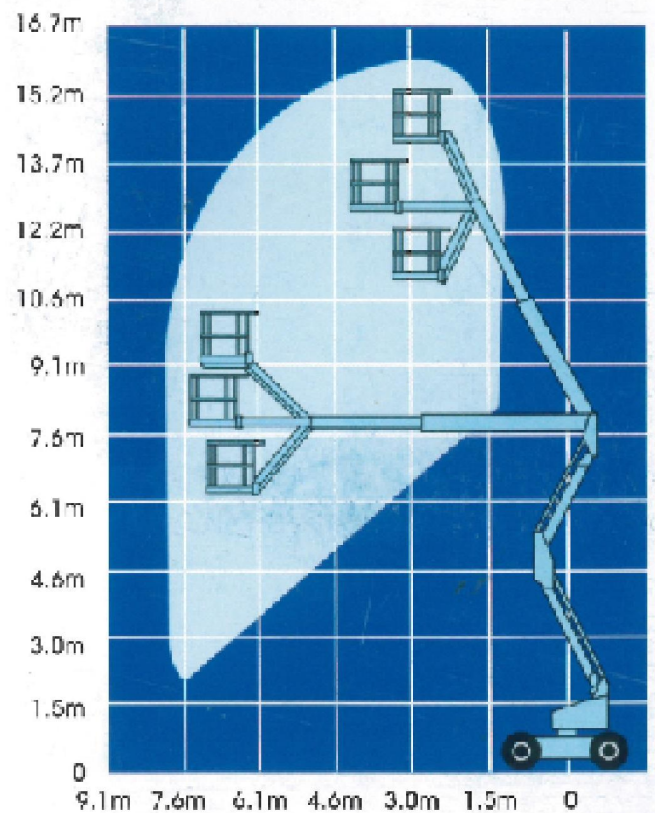


# AB46RT self propelled boom specifications

AB46RT 4WD	
max. working height	16.3m
max. platform height	14.3m
max. working outreach	7.6m
jib length	1.5m
jib arc	140°
platform capacity (SWL)	227kg
platform size - outside	1.0m x 1.85m
platform rotation	180°
turret rotation	360° non-continuous
width A	2.1m
stowed height B	2.2m
stowed length C	5.85m
gross weight	7,550kg
gradeability	22°/40%
inside turning radius	0.60m
outside turning radius	3.0m
tailswing - stowed	0
cycle time to full height	110 secs
ground clearance	330mm
max. drive speed - stowed	7.2km/h
max. drive speed - elevated	1.0km/h
tyres	high grip poly filled
power source	Kubota V1505T Diesel



Specifications subject to change without notice. Photos and diagrams in this brochure are for promotional purposes only. Refer to appropriate UpRight operators manual for detailed instructions on the proper use and maintenance.

## UpRight AB46RT

